

Yeshivat Noam 6th Grade Social Studies:
A Passport to Ancient Civilization

Rabbi Hellman

Bayit Rishon Museum

Introduction:

Throughout the year, we have had two guided questions which have propelled our class:

1. How does geography impact the development of a civilization?
2. How do artifacts teach us about history?

For this project, we will focus on the second question by looking at the following historical artifacts:

1. The House of Achiel
2. Bullae
3. Hezekiah's Tunnel
4. The Lachish Reliefs
5. Sennacherib's Annals



The Project:

The goal of the project is to create a museum dedicated to the Bayit Rishon (1st Temple) Period. In order to create a meaningful, accurate, and engaging museum, we need to become experts in the Bayit Rishon Era and in the artifacts that our museum will host. We will need to know the physical aspects (size, material, etc) of our artifacts, why they are historically significant, and what they teach us about the Bayit Rishon Era. More importantly, we need to think creatively about how to design a museum that will spark interest in the Bayit Rishon Era

Please note the major components of the project before we begin:

- I. Artifact Research
 - In order to complete the initial step of your project, you will need:
 - To read the relevant articles about your artifacts
 - To answer the provided questions about your artifact
 - To demonstrate a clear understanding of your artifact
- II. Paragraph Planning/Writing
 - Completing your description of your artifact
- III. Museum Design
 - Creating a Museum for your artifact to educate an audience

Important dates to keep in mind:

1. **January 5th**- Artifact Research is due
2. **January 16th**- Paragraph Planning is due
3. **February 6th**- Museum Design is due

Looking forward to an amazing experience and seeing the creative museums that you design! Please reach out to me with any questions, concerns, or comments.

-Rabbi Hellman



Artifact Research

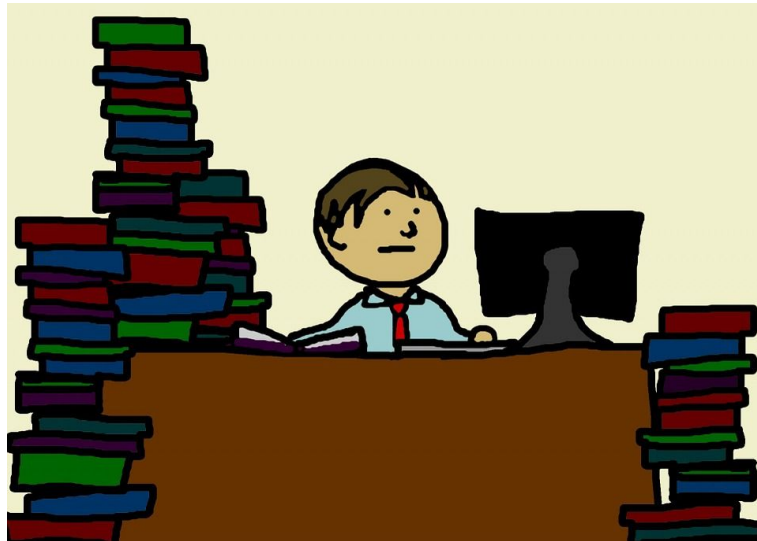
Each student will be assigned one of five artifacts. Each student will be required to read between 3-5 corresponding articles in order to get a clearer understanding of the artifact. To ensure your grasp of the articles, guided questions are provided to be answered. The questions and articles are shared with you on Schoology/Google Drive. **Do not rush through the articles just to answer the questions.** It will be very difficult to develop your Bayit Rishon Museum if you are missing information about your artifacts. For this section, you do not need complete sentences, rather your focus should be about understanding your artifact including its physical qualities, its historical significance, and what it tells us about the Bayit Rishon Era.



Remember this is to be completed on January 5th.

Paragraph Planning/Writing

As you know, every artifact at a museum has a small description explaining the artifact. Without these explanations, it would be impossible for the visitors to properly understand the exhibited items. To help prepare your artifact's brief description, in a document shared with you on Schoology/Google Drive titled "Bayit Rishon Paragraph Planning," you will answer two sets of questions **using complete sentences** (1 purple and 1 green). Upon completing these questions, you will develop two topic sentences. One topic sentence will be used to introduce your first paragraph (made from your purple questions and answers) and another topic sentence to introduce your second paragraph (made from your green questions and answers). Obviously, you will need to include transition words to make your paragraphs smooth and descriptive.



Remember your paragraphs are to be complete on January 16th.

Rubric for Artifact Research & Paragraph Planning/Writing

	4	3	2	1
Timeliness	All questions and paragraphs were completed on time.	Most questions and paragraphs were completed on time.	Some questions and paragraphs were completed on time.	No questions and paragraphs were completed on time.
Student Productivity	Student was engaged and productive throughout the entire research and writing process.	Student was engaged and productive throughout most of the research and writing process.	Student was engaged and productive throughout some of the research and writing process.	Student was disengaged and had a difficult time being productive during research and writing process.
Research and Questions	Student thoroughly researched the artifacts and fully answered the guided questions.	Student researched the artifacts and answered the guided questions.	Student somewhat researched the artifacts and partially answered the guided questions.	Student struggled researching the artifacts and at answering the guided questions.
Written Expression	Student was able to clearly describe the physical features of the artifact and definitively express its historical significance with accurate details	Student was able to describe the physical features of the artifact and express its historical significance with accurate details	Student was able to describe some of the physical features of the artifact and express its historical significance with accurate details	Student struggled to describe the physical features of the artifact and express its historical significance with accurate details

Museum Design

At this point, you have each become experts in an artifact connected to the Bayit Rishon Period. Now that you are an expert, you need to teach others about your artifact and its historical significance.

Using Google Sites, you will create a website that will be a virtual museum for your artifacts. This will allow anyone around the world to “visit” your museum to find out about this critical time period. As we have seen, many museums around the world are “at risk” as violence at archaeological sites has risen, and this is an opportunity to preserve these artifacts.



Task: In a small group you will create your own “Bayit Rishon Museum” Website. There will be a representative from each of the 5 artifacts in the group. Each student will be in charge of properly explaining their artifact.

General Guidelines:

1. Your website must be engaging and creative to attract and retain a large audience to your website.
2. It must be informative and accurate as people will use this website to research and investigate these artifacts.
3. A visitor to your website needs to be able to easily access the information that is necessary and relevant to them.

Specific Guidelines

1. A home page that introduces your website and grabs the attention of prospective viewers
 - a. Name of your museum
 - b. Goal(s) of your museum

- c. Pictures/text to entice your audience, but don't give too much away.
- d. Table of contents/tabs to other pages in your website
- 2. Pages about your artifacts
 - a. Description of your artifacts (your paragraphs)
 - b. Pictures
 - c. Videos
- 3.. Connection between your artifact and Tanach
 - a. Pesukim (Please copy your pesukim in Hebrew and English)
 - b. Relevant text/pictures/videos

Your Museum is to be completed on February 6th.



Rubric for your Bayit Rishon Museum (note: the rubric is for each individual, not for the group)

	4	3	2	1
Timeliness	All parts of the Bayit Rishon Museum were fully completed including the homepage and artifact pages with the required information	Most of the Bayit Rishon Museum was completed including the homepage and artifact pages with the required information	Some of the Bayit Rishon Museum was completed including the homepage and artifact pages with the required information	The Bayit Rishon Museum was not completed as the homepage and artifact pages with the required information
Group Productivity	Student consistently collaborated with partners in their group to improve the group and independent aspects of the Bayit Rishon Museum	Student often collaborated with partners in their group to improve the group and independent aspects of the Bayit Rishon Museum	Student sometimes collaborated with partners in their group to improve the group and independent aspects of the Bayit Rishon Museum	Student struggled at collaborated with partners in their group to improve the group and independent aspects of the Bayit Rishon Museum
Museum Design (Content)	The site has a well-stated clear purpose and theme that is carried out throughout the site with accurate details.	The site has a clearly stated purpose and theme, but may have one or two elements that do not seem to be related to it.	The purpose and theme of the site is somewhat vague and lacks some important details.	The site lacks a purpose and theme.
Museum Design (Layout)	The Web site has an exceptionally attractive and usable layout. It is easy to locate all important elements. Student paid close attention to font size, style, and graphics	The Web pages have an attractive and usable layout. It is easy to locate all important elements. Student used appropriate font size, style, and graphics	The Web pages have a usable layout, but may appear busy or boring. It is easy to locate most of the important elements.	The Web pages are cluttered looking or confusing. It is often difficult to locate important elements.